

**PHILIPS**

**EasyKey**

7000 series

Smart Facial  
Recognition Door  
Lock

DDL702

# User manual

To register your product(s)  
and get support from below  
site

[www.philips.com/support](http://www.philips.com/support)





# Contents

---

<b>1. Important information</b>	02	<b>6. Other functions</b>	17
Security		Indoor infrared sensor unlock	
Caution		Outside forced lock	
Disposal of used products and batteries		One key to mute mode	
		Restore to default settings	
<b>2. EasyKey installation</b>	03	<b>7. Indicators meaning and usage</b>	19
Packaging list		Door lock status indicator	
Exploded views		Low battery voltage indicator	
Pre-installation instructions		Outside forced lock indicator	
Installation steps		Mute indicator	
		Inside deadlock indicator	
<b>3. Get to know your EasyKey</b>	08	System freezing indicator	
Outside escutcheon		[OPEN/CLOSE] indicator	
Inside escutcheon		Indoor infrared sensor unlock indicator	
<b>4. How to set up your Easykey</b>	09	<b>8. Troubleshooting</b>	21
Pre-setup instructions		Alert types and methods	
Enter master mode		How to charge EasyKey in an emergency	
Modify master PIN code		How to replace batteries	
Add a user record			
Delete a user			
System settings			
Extended functions			
System query			
<b>5. How to use EasyKey</b>	15		
Unlock from outside or inside			
Lock from outside or inside			
Inside deadlock			
Unlock with mechanical key			

---

# 1. Important information

---

## Safety

- ◆ Before using Philips EasyKey, please read and understand all instructions. Damage caused by non-compliance with the instructions will not be covered by warranty.
- ◆ Use only the manufacturer-specified accessories/components.
- ◆ Use only the alkaline batteries the product is equipped with, or use the same specification type of alkaline batteries.
- ◆ Do not forcibly disassemble this product to avoid triggering an alarm or damaging the product.
- ◆ Do not scrape the fingerprint sensor with sharp objects, otherwise it may cause permanent damage.
- ◆ Do not expose products to environments where there is water leakage or splashing.
- ◆ Do not expose the product to corrosive substances to prevent damaging the protective cover.
- ◆ Do not hang objects on the handle, in case it might affect the normal use of the lock.
- ◆ Please clean the product with a soft cloth.
- ◆ Do not remove the battery during setting up and operating.
- ◆ Please let a professional technician to install the door lock and follow the installation guidelines provided. Do not disassemble the lock by yourself. Keep the relevant sealed stickers properly.
- ◆ Please modify the default master PIN code immediately after finishing installing and debugging, and do not easily disclose the password information and also keep the mechanical key properly.
- ◆ Please replace all the batteries immediately if there is a low battery alarm. Please make sure to correctly match the poles (+/-) when installing the batteries.

## Caution

- ◆ Do not place the battery near fire sources to avoid the explosion.
- ◆ Do not use any emergency power supply that does not meet the safety requirements to power up the product.
- ◆ Do not connect the 2 poles of the batteries with metals to avoid short circuit which may lead to an explosion.
- ◆ Please make sure any component replacement is executed by Philips, Philips authorized service center or professional technicians.
- ◆ Do not use accessories or parts that have been produced by other manufacturers or have not been specifically recommended by Philips. The use of such accessories and parts may void your warranty.

## Disposal of used products and batteries

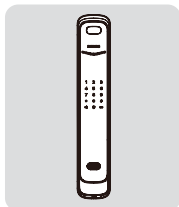
- ◆ You can have your locks reclaimed at Philips authorized service centers. You will receive corresponding compensation if your products meet our conditions.
- ◆ Please familiarize yourself with the local electronic product collection system.
- ◆ Please follow local regulations and do not discard used products into ordinary household waste.
- ◆ Proper disposal of used products can help to avoid potential negative impacts on the environment and human health.
- ◆ Batteries must not be disposed of with ordinary household waste.
- ◆ Please familiarize yourself with the local regulations on batteries classification recycling. Disposing of batteries properly can help avoid a negative impact on the environment and human health.

## 2. EasyKey installation

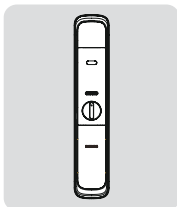
---

### Packaging list

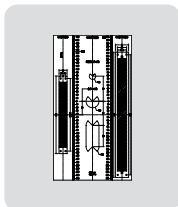
The pictures are for reference only, please refer to the actual packaging items.



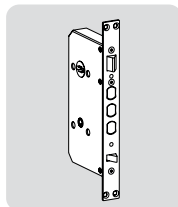
① Outside escutcheon with silicone pad



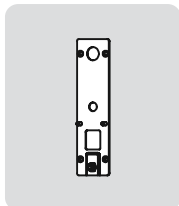
② Inside escutcheon with silicone pad



③ Drilling template



④ Mortise



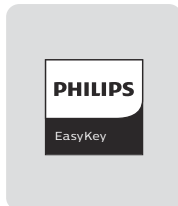
⑤ Mounting plate



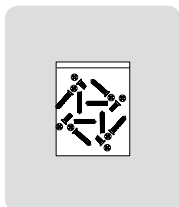
⑥ User manual



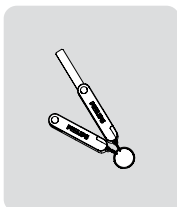
⑦ Warranty card



⑧ Certificate of conformity



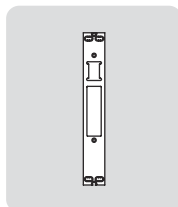
⑨ Installation kit



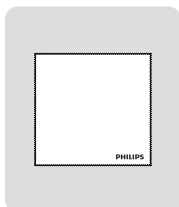
⑩ Mechanical key



⑪ Batteries

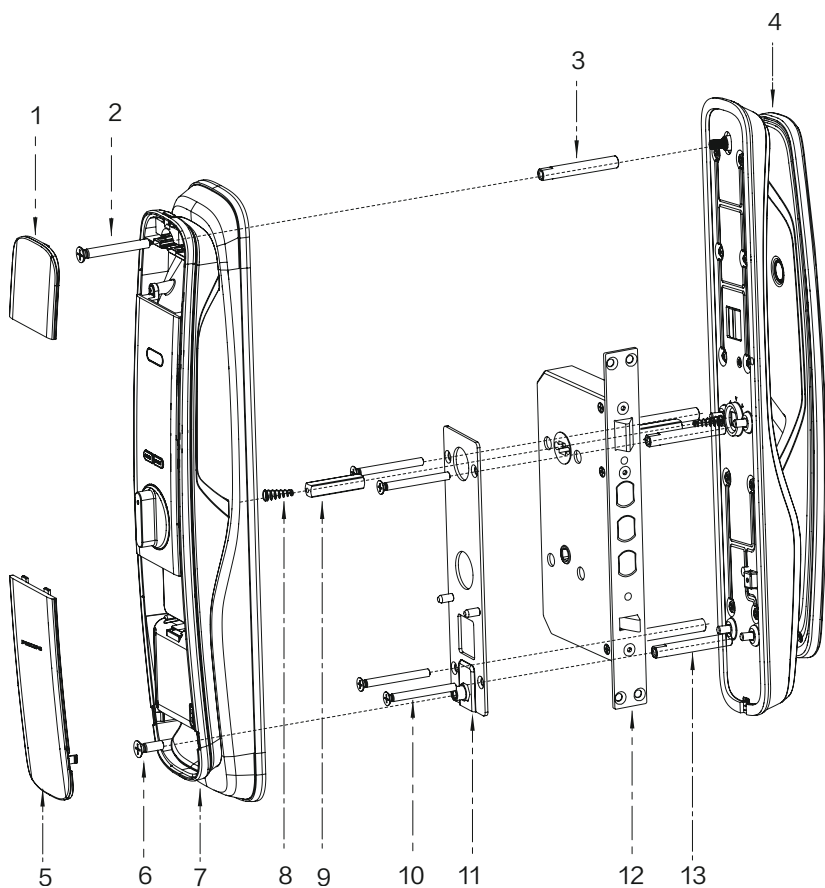


⑫ Strike



⑬ Cleaning pad

## Exploded views

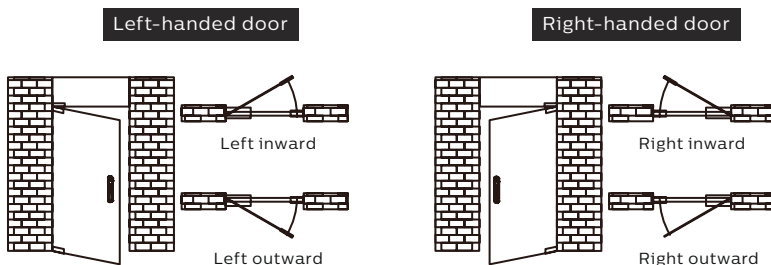


- |                               |                                |
|-------------------------------|--------------------------------|
| 1. Deco cover *1              | 8. Compressed spring *2        |
| 2. M6 connecting screw*1      | 9. Square shaft*2              |
| 3. M6 connecting screw tube*1 | 10. M5 connecting screw*4      |
| 4. Outside escutcheon*1       | 11. Mounting plate*1           |
| 5. Battery cover*1            | 12. Mortise*1                  |
| 6. M6 mounting screw*1        | 13. M5 connecting screw tube*4 |
| 7. Inside escutcheon*1        |                                |

## Pre-setup instructions

### Step 1 | Determine door swing direction

This product allows you to have your door installed to go in four directions: left outward, right outward, left inward and right inward.

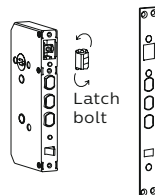
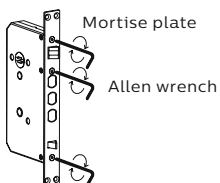


#### ⚠ Attention

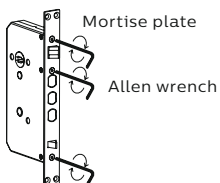
1. Please choose the proper installation kit to suit your door thickness.
2. The default installation kit is applicable for a door thickness of 60-90mm. If your door thickness does not within this range, please feel free to contact us.

### Step 2 | Change the orientation of the latch bolt

- 1 Loosen the screws by turning them counterclockwise with an Allen wrench and remove the mortise plate.
- 2 Take out the latch bolt and rotate it to 180°, then put it back.



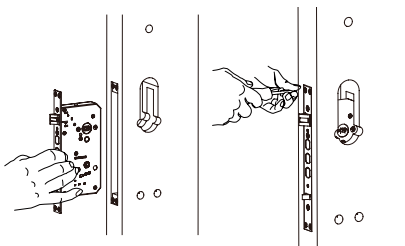
- 3 Mount the mortise plate and fasten it with screws.



## Installation steps

The following installation steps only apply to right-handed doors. For left-handed doors, please read [Pre-installation instructions] carefully and make necessary adjustments.

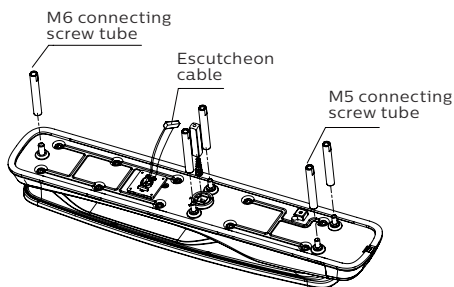
- 1 Mark the hole for drilling with drilling template and drill the hole marked, then mount the mortise into the hole and fasten it with four anchor screws.



### ⚠ Attention

Make sure the latch bolt stays inside the door during installation.

- 2 Install the connecting screw tubes on the outside escutcheon, and put the compressed spring and square shaft accordingly into the square shaft holes.



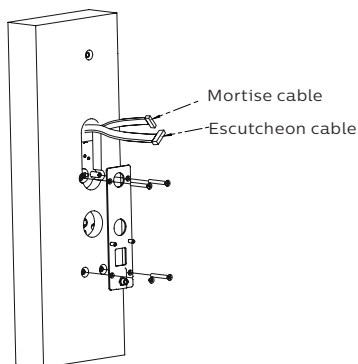
### ⚠ Attention

Please choose the proper square shaft and connecting screw tube to suit your door thickness.

- 3 Pass the cable through the hole and then insert the square shaft of the outside escutcheon to the rotary hole on the mortise until the outside escutcheon is close to the surface of the door.



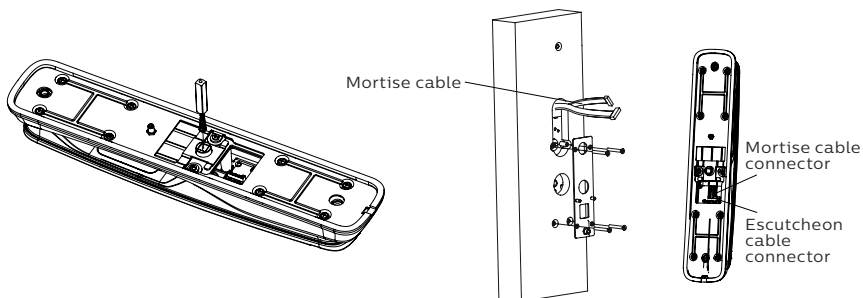
- 4 Place the mounting plate against the inner surface of the door and fasten it with four M5 connecting screws.





- 5 Put the compressed spring and square shaft into the square shaft hole of the inside escutcheon accordingly.

- 6 Insert the cable of both outside escutcheon and mortise into the corresponding sockets on the inside escutcheon. Then insert the square shaft of the inside escutcheon to the rotary hole on the mortise until the inside escutcheon is close to the surface of the door.



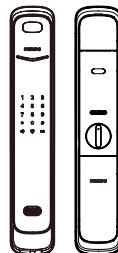
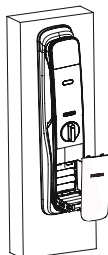
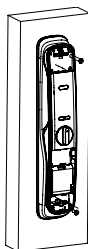
**Attention**

Make sure the escutcheon cable and the mortise cable are hidden in the slot on both sides of the square shaft, and also hide the extra cables in the door hole or the inside escutcheon.

- 7 Remove the deco cover and press the button at the top of the inside escutcheon to remove the battery cover, and fasten the inside escutcheon with two M6 mounting screws.

- 8 Put the deco cover back, install the batteries and install the battery cover and strike.

- 9 Check whether the rotary knob, mechanical key, and all other components work properly.



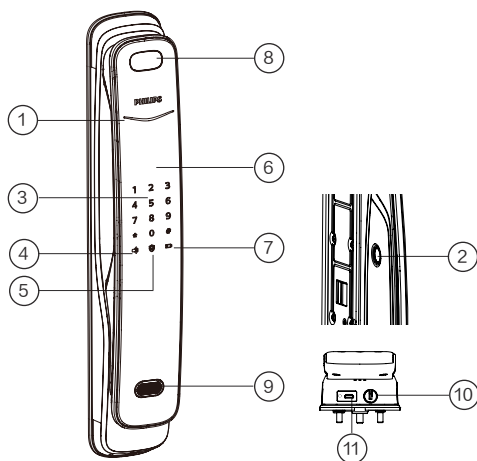
**Attention**

After finishing the strike installation, please check whether the smart lock can lock or unlock normally.

### 3. Get to know your EasyKey

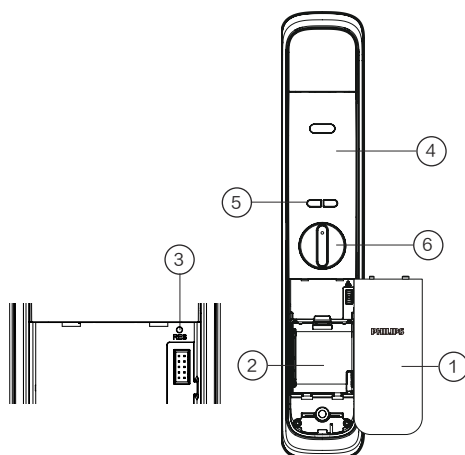
The pictures are for reference only, please refer to the actual packaging items.

#### Outside escutcheon



①	Door lock status indicator
②	Fingerprint sensor(Back side of the handle)
③	Keypad
④	Mute button
⑤	Outside forced lock button
⑥	Handle
⑦	Low battery voltage indicator
⑧	Facial recognition area
⑨	Ultrasonic sensor
⑩	Keyhole
⑪	Reboot and emergency power supply interface

#### Inside escutcheon



①	Battery cover
②	Battery compartment
③	Restore to a default setting
④	Handle
⑤	[OPEN/CLOSE] button
⑥	Rotary knob

## 4. How to set up your EasyKey

### Pre-setup instructions

◆ Philips EasyKey comes with two modes: General mode and Dual verification mode.

<b>General mode</b>	Unlock with any registered identity information
<b>Dual verification mode</b>	Unlock with the combination of two different verifications among face, PIN code and fingerprint.

#### ⚠ Attention

1. Facial recognition unlocking will be off when the battery level is low.
2. Before setting the dual verification mode, fingerprints and PIN codes need adding to unlock the door other than the face.

#### ◆ User code

If you want to delete a specific user's information, you could delete the related user code in the system.

You can use the below template to write down all user information for review.

User code	Name	Fingerprint	Password	Face
00				
01				
02				
03				
04				
05				
06				

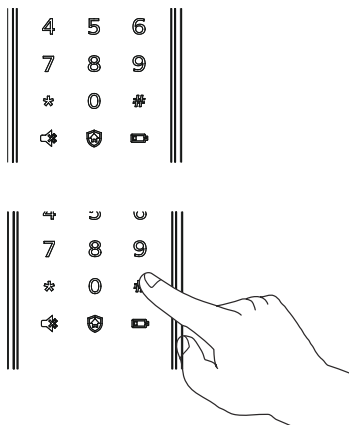
#### ◆ Icon annotation

Master PIN code	One-time PIN code	User PIN code	Fingerprint	Face	User code 00-19	User code 00-99	[#]	[*]

#### ⚠ Attention

1. Press [\*] key to return to the previous menu.
2. The default master PIN code is 12345678.

## How to enter master mode



Light up the keypad and enter [#] before you enter any other numbers, then enter master PIN code and confirm with [#].

## Modify master PIN code



Enter [#] and enter master PIN code, then confirm with [#].

1

Enter [1] to modify master PIN code.



Enter the new master PIN code and confirm with [#]. Re-enter the same master PIN code and confirm with [#]. After hearing a voice prompt of "Succeeded", press [\*] to return to previous menu until you finally exit master mode.

## Add a user record

### Add a user PIN code



Enter [#] and enter master PIN code, then confirm with [#].

2 1

Enter [2] to enter user registration and enter [1] to add a new user PIN code, then the system will automatically number it and generate a voice prompt.



Enter a user PIN code of 6 to 12 digits and confirm with [#]. Then re-enter the user PIN code and confirm with [#]. After hearing a voice prompt of "Succeeded", press [\*] until you finally exit master mode.

### Add one-time PIN code



Enter [#] and enter master PIN code, then confirm with [#].

2 2

Enter [2] to enter user settings, then enter [2] again to add a one-time PIN code.



Enter a user PIN code of 6 to 12 digits and confirm with [#]. Then re-enter the user PIN code and confirm with [#]. After hearing a voice prompt of "Succeeded", press [\*] until you finally exit master mode.

### Add a fingerprint



Enter [#] and enter master PIN code, then confirm with [#].



Enter [2] to enter user registration and enter [3] to add a user fingerprint, then the system will automatically number it and generate a voice prompt.



Place your finger on the fingerprint sensor until you hear a voice prompt of "Move your finger and put on again". Lift your finger and repeat the process until you hear a voice prompt of "Succeeded". After you have successfully registered your fingerprint, press [\*] until you finally exit the master mode.

### Add a face



Enter [#] and enter the master PIN code, then confirm with [#].



Enter [2] to enter user registration and enter [5] to add a user's face, then the system will automatically number it and generate a voice prompt.



Position your face in front of the camera and gently move your head in different angles by following the voice prompt. After hearing a voice prompt of

Succeeded', press [\*] until you finally exit the master mode.

#### ⚠ Attention

1. Directly enter 405# to turn on the face unlock feature.
2. Directly enter 406# to turn off the face unlock feature.

## Delete a user record

### Delete a single user PIN code



Enter [#] and enter master PIN code, then confirm with [#].



Enter [3] to enter user record deletion and enter [1] to enter user PIN code deletion, then enter [1] to delete a single user PIN code.



Enter a 2-digit code (code: 00-19) to be deleted and confirm with [#]. After hearing a voice prompt of "Succeeded", press [\*] until you finally exit the master mode.

### Delete all user PIN code



Enter [#] and enter master PIN code, then confirm with [#].



Enter [3] to enter user record deletion and enter [1] to enter user PIN code deletion, then enter [2] to delete all user PIN code. After hearing a voice prompt of "Succeeded", press [\*] until you finally exit the master mode.

#### Delete one-time PIN code



Enter [#] and enter master PIN code, then confirm with [#].



Enter [3] to enter user record deletion and enter [2] to delete one-time PIN code.



After hearing a voice prompt of "Succeeded", press [\*] until you finally exit the master mode.

#### Delete a single fingerprint



Enter [#] and enter master PIN code, then confirm with [#].



Enter [3] to enter user record deletion and enter [3] to enter user fingerprint deletion, then enter [1] to delete a single fingerprint.



Enter a 2-digit code (code: 00-99) to be deleted and confirm with [#]. After hearing a voice prompt of "Succeeded", press [\*] until you finally exit the master mode.

#### Delete all fingerprint



Enter [#] and enter master PIN code, then confirm with [#].



Enter [3] to enter user record deletion and enter [3] to enter user fingerprint deletion, then enter [2] to delete all fingerprint. After hearing a voice prompt of "Succeeded", press [\*] until you finally exit the master mode.

#### Delete a user's face



Enter [#] and enter master PIN code, then confirm with [#].



Enter [3] to enter user record deletion and enter [5] to enter face record deletion, then enter [1] to delete a single face.



Position the face to be deleted in front of the camera and look at that camera directly with head straight on. After hearing a voice prompt of "Succeeded", press [\*] until you finally exit the master mode.

#### Delete all face

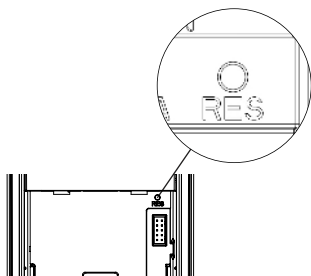


Enter [#] and enter the master PIN code, then confirm with [#].



Enter [3] to enter user record deletion and enter [5] to enter face record deletion, then enter [2] to delete all face. After hearing a voice prompt of "Succeeded", press [\*] until you finally exit the master mode.

## System initialization



Remove the battery cover, then double press the [RES] hole with a sharp object. When you hear a voice prompt of "Restoring to default settings", it means all user record is emptied.

## System settings

### Language settings



Enter [#] and enter master PIN code, then confirm with [#].



Enter [4] to get into system settings and enter [1] to get into language settings.



Choose the language as needed: For Chinese, press [1]; for English, press [2]. After hearing a voice prompt of "Succeeded", press [\*] until you finally exit the master mode.



The default language is English.

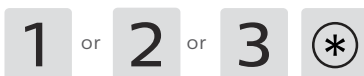
## Volume settings



Enter [#] and enter master PIN code and confirm with [#].



Enter [4] to get into system settings and then enter [2] to enter into volume settings.



Choose the volume as needed: For high volume, press [1]; for low volume, press [2]; for mute mode, press [3]. After hearing a voice prompt of "Succeeded", press [\*] until you finally exit the master mode.



The default volume is "high volume".

### Switch to dual verification mode



Enter [#] and enter master PIN code, then confirm with [#].



Enter [4] to go into system settings, then enter [3] to go into dual verification mode.



For single verification mode, please press [1]; For dual verification mode, press [2]; After hearing a voice prompt of "Succeeded", press [\*] until finally you exit master mode.

## Extended functions



Enter [#] and enter master PIN code, then confirm with [#].

5

Enter [5] to go into extended functions.

1 or 2

To join a network, press [1]. To exit a network, press [2]. Before setting up the extended functions, please download and open the official app on your mobile phone.

### ⚠ Attention

1. The extended functions are optional.
2. You can scan the QR code below and follow the instructions to complete installing official app.



## System query

### Security code query



Enter [#] and enter master PIN code, then confirm with [#].

6 1

Enter [6] to go into system query, then enter [1] to check the security code and the system will automatically broadcast the product series number.

### ⚠ Attention

Directly enter 400# to go into system query.

### Local query



Enter [#] and enter master PIN code, then confirm with [#].

6 2

Enter [6] to go into system query, and enter [2] to check the software version, then the system will broadcast it automatically.

### ⚠ Attention

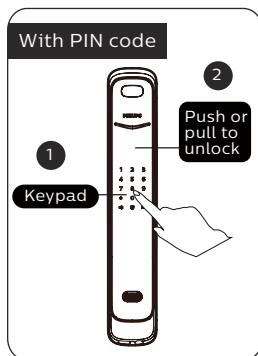
Directly enter 114# to go into the local query.



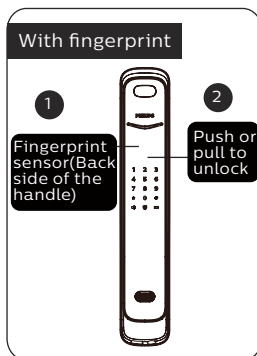
# 5. How to use EasyKey

## Unlock from inside or outside

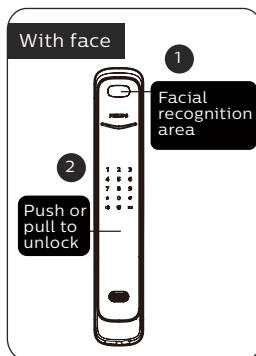
### Unlock from outside



① Touch the digit input area to light up the keypad and enter the registered PIN code and confirm with [#].  
② After hearing a voice prompt of "Door opened", push or pull the door to unlock.

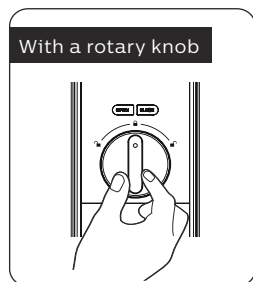


① Place the registered finger on the fingerprint sensor.  
② When you hear a voice prompt of "Door opened", push or pull the handle to unlock.

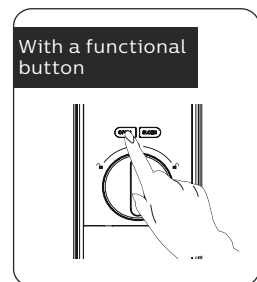


① Position the registered face in front of the camera.  
② When you hear a voice prompt of "Door opened", push or pull the handle to unlock.

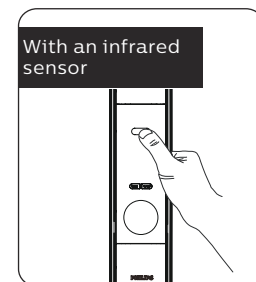
### Unlock from inside



Philips EasyKey adopts indoor fast opening mortise. You can unlock the door from inside by rotating the rotary knob.



Double press the [OPEN] functional button within one second, then push or pull to unlock the door.

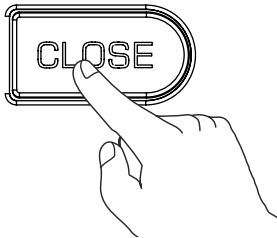


Philips Easykey has an infrared sensor on the handle. When the sensor is triggered, you can press the sensor module on both the front and rear sides of the handle simultaneously to unlock the door.

## Lock from outside or inside

The latch bolt will pop up automatically as soon as the door is close and there will be a voice prompt of "Door Close".

## Inside deadlock

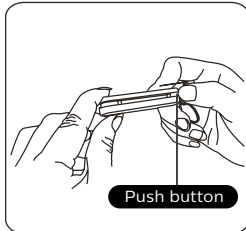


When the EasyKey is locked, long press the [CLOSE] button until the indicator flashes once in red, then there will be a voice prompt of "Inside deadlock enabled".

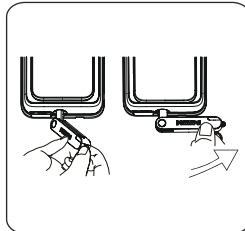
### ⚠ Attention

When the door is under inside deadlock mode, the outside escutcheon will lock up. If you try to wake up the system manually, the keypad area will display the combination of "15937(X)" and there will be a voice prompt of "Inside deadlock enabled" to remind you that the door has been deadlocked from inside. Under deadlock mode, all operations of the outside escutcheon are disabled. Master PIN code verification or mechanical key opening is required to release the door from deadlock mode.

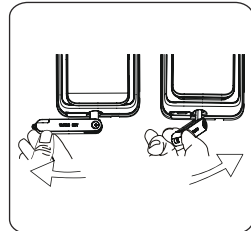
## Unlock with mechanical key



① Cut the mechanical box and take out the key. Push the cover aside and reveal the key.



② Insert the key into the keyhole and the key should be vertical to the key shell. Then turn the key shell by 90° in the direction of the handle until it is close to the lock.



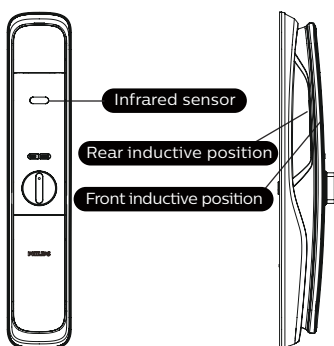
③ Make a 180 degrees twist clockwise and make sure the key shell is parallel to the horizontal plane. Then rotate the key cover horizontally in the direction of the handle to unlock.

### ⚠ Attention

It is recommended not to use mechanical keys daily unless there is an emergency, such as the battery is dead, forgetting the password, or the system is not working properly.

## 6. Other functions

### Indoor infrared sensor unlock



#### ⚠ Attention

When the infrared sensor unlocking is disabled, the indoor inductive unlocking would be inactive. When you touch both the front and rear side of the inductive position on the handle, the red light will light up to remind you that the indoor inductive unlocking is off.

#### Function:

Once the indoor infrared sensor unlocking is enabled, you could easily unlock the door from inside.

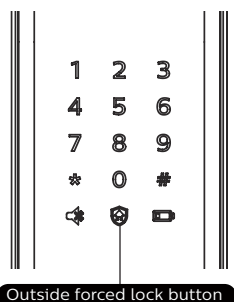
#### How to use:

Philips Easykey has an infrared sensor on the handle. When the sensor is triggered, you can press the sensor module on both sides of the handle simultaneously to unlock the door.

#### Enable/Disable:

When the infrared sensor unlocking is disabled, long press the [OPEN/CLOSE] button at the same time to turn on the function, and the green light will glow quickly;  
When the infrared sensor unlocking is enabled, long press the [OPEN/ CLOSE] button at the same time to turn off the function and the red light will glow quickly.

### Outside forced lock



#### Function:

Unlocking from inside will trigger an alert.

#### How to use:

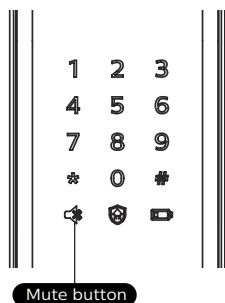
After the door is successfully locked, long press the button for 2 seconds to enter the outside forced lock mode.

#### ⚠ Attention

Enabling the outside forced lock function will not affect the normal way to unlock the door from outside.

## Mute mode

---



### Function:

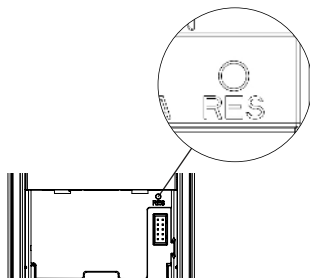
Use only one button to mute the lock and the voice guide will be turned off. This feature applies to the scenes where you don't want to disturb your family.

### How to use:

1. Mute: When the system is awake, long press the [Mute] button for 2 seconds until it glows green.
2. Unmute: When the system is awake, long press the [Mute] button for 2 seconds until it glows white and the lock will produce sound again.

## Restore to default settings

---



### Function:

Empty all user information and restore the EasyKey to default settings.

### How to use:

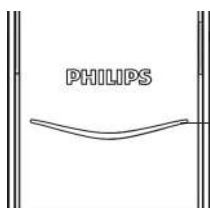
Use a sharp object to double press the [RES] button, and all the user information will be emptied, then the lock will be restored to default settings.

## 7. Indicators meaning and usage

---

### Door lock status indicator

---



Door lock status indicator

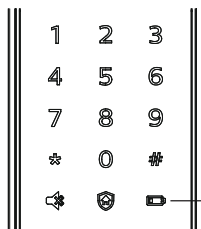
**Blue:** When the system wakes up and the light glows blue, it means you can use the lock.

**Green:** When the door is unlocked and the light glows green, it means the door is open.

**Red:** When the door is locked and the light glows red, it means the door is closed.

### Low battery voltage indicator

---



Low battery voltage indicator

**Red:** When the system wakes up, it will automatically check the battery voltage. If the voltage is too low, then the light will flash in red and there will be a voice prompt of "Low battery voltage, please replace all batteries".

### Outside forced lock indicator

---



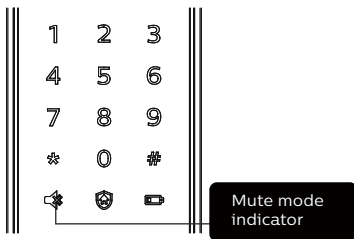
Outside forced lock indicator

**White:**

1. When the door is locked and the light glows in white, it means that you can enable the outside forced locking function.

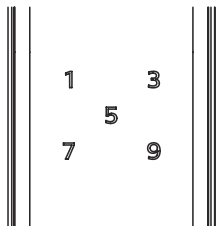
2. Upon the outside forced function is enabled, the light will glow in white as soon as the system wakes up.

## Mute mode indicator



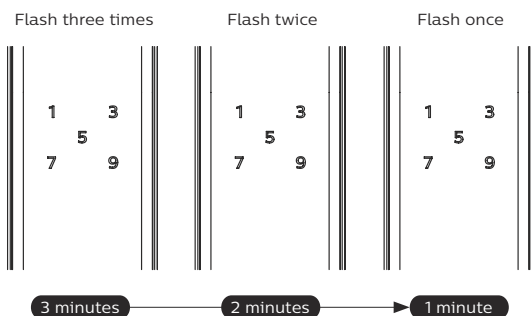
1. **White:** indicates the mute mode is off.
2. **Green:** indicates the mute mode is on.

## Inside deadlock indicator



When the door is under inside deadlock mode, the keypad will lock. If you wake up the system manually, the keypad will show the combination of "15937 (X)" with a voice prompt of "inside deadlock enabled".

## System freezing indicator



If there are consecutive incorrect inputs of any of the fingerprint, PIN code, or key tag 5 times within 5 minutes, the system will lock up for 3 minutes.

### ⚠ Attention

Only when waking up the outside escutcheon or verifying the identity of the user would the numbers appear.

## [OPEN/CLOSE] indicator

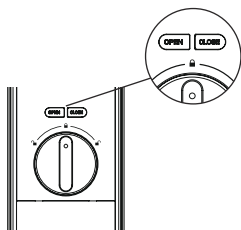
---



1. Red light flashing twice: indicates that the door is locked successfully.
2. Green light flashing twice: indicates that the door is unlocked successfully.
3. Red light flashing once: indicates that the door is under the deadlock mode.

## Infrared sensor unlocking indicator

---



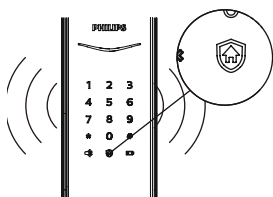
1. Fast flashing in green: infrared sensor unlocking is on.
2. Fast flashing in red: infrared sensor unlocking is off.

# 8. Troubleshooting

---

## Alert types and methods

Alert to unlock from inside under outside forced lock mode

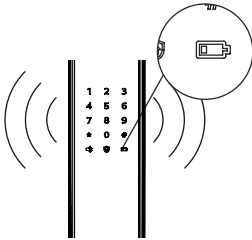


**Way to trigger:** Upon enabling the outside deadlock mode, an alert will be triggered when you unlock the door from inside.

**Way to be alerted:** Repeat alerts

**Way to turn off:** The alert will be turned off once the identity verification is successful.

## Low battery voltage alert reminds you to replace the batteries

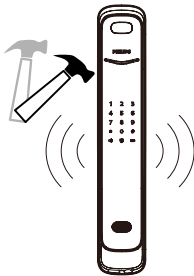


**Way to trigger:** When the system wakes up, it will automatically check the battery voltage. If the voltage is too low, then an alert will be triggered to remind you to replace the batteries.

**Way to be alerted:** A voice prompt of "Low battery voltage, please replace all batteries" will be given when unlocking the door.

**Way to turn off:** The alert will be automatically turned off.

## Anti-dismantling alert



**1. Way to trigger:** The door is pried apart and the latch bolt is popped up.

**Way to be alerted:** Repeat alerts.

**Way to turn off:** Automatically turning off or successful identity verification.

**2. Way to trigger:** The outside escutcheon is pried open and there is a gap of space between the door and the outside escutcheon.

**Way to be alerted:** Repeat alerts.

**Way to turn off:** Automatically turning off or successful identity verification or a normal way to unlock the door from inside.

## Anomalous deadbolt alert



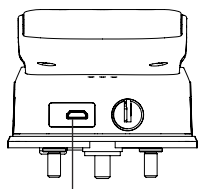
**Way to trigger:** The deadbolt works abnormally or a failure in locking or unlocking the door.

**Way to be alerted:** Repeat alerts

**Way to turn off:** The alert will be automatically turned off.



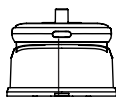
## How to charge EasyKey in an emergency



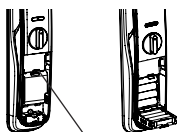
Reboot and emergency power supply interface

When the battery voltage is low, and the door cannot be opened from outside, you can power up the lock by plugging 5V power bank into the micro USB. After the door is unlocked, please replace the batteries instantly. If the system crash occurs and the door can not be unlocked from outside, please press and release the reboot button to restart the system.

## How to replace batteries



Battery cover button



Battery cover buckle

To keep the batteries running longer and save you from replacing the batteries repeatedly, the lock is powered by 1.5V alkaline batteries and can contain eight batteries at the same time. The battery compartment is in the lower part of the inside escutcheon. Press the button near the bottom of the inside escutcheon, then remove the battery cover. By pushing the battery cover buckle upwards, you can pull the battery compartment out and replace the batteries.



Philips and the Philips Shield Emblem are registered trademarks of Koninklijke Philips N.V. and are used under license. This product has been manufactured by and is sold under the responsibility of Shenzhen Conex Intelligent Technology Co., Ltd, and Shenzhen Conex Intelligent Technology Co., Ltd is the warrantor in relation to this product.